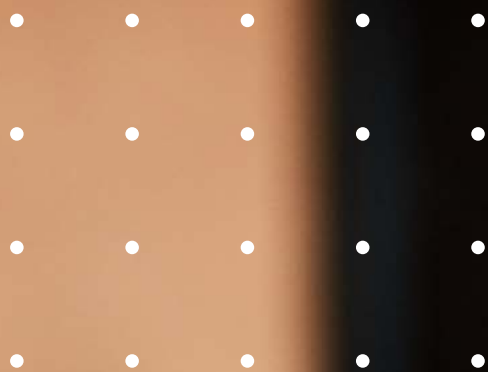




Murdoch University



2022 Postgraduate

MINI COURSE GUIDE



Free your think





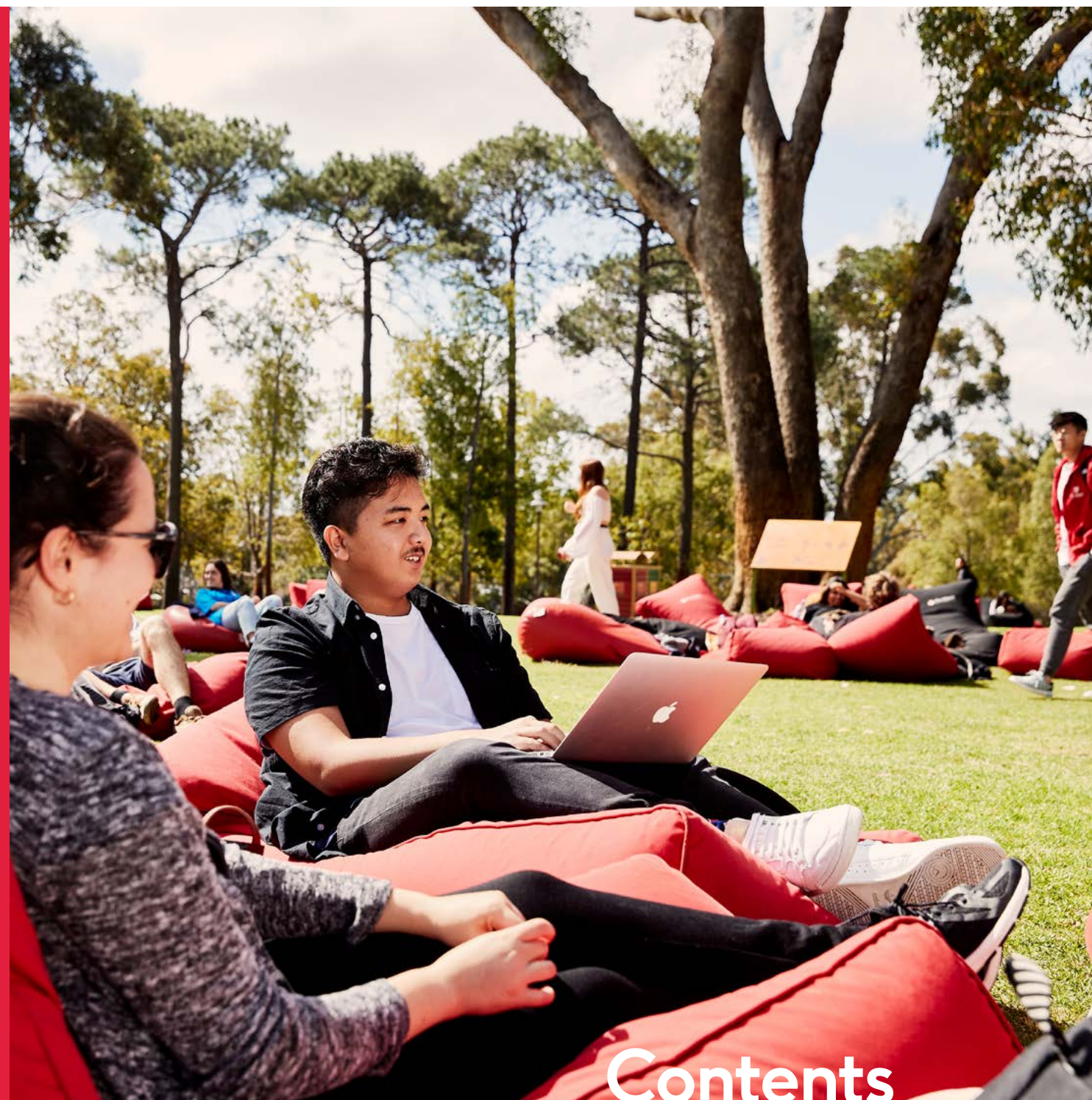
When you're thinking for yourself

there's no limit
to what you
might achieve.

Acknowledgement of Country

Murdoch University acknowledges the Whadjuk people of the Noongar nation as the traditional custodians of this country and its waters and that Murdoch University stands on Noongar Country.

Murdoch University pays its respects to Noongar elders past and present and acknowledges their wisdom and advice in teaching and cultural knowledge activities.



Contents

| | |
|---|----|
| The Murdoch difference | 02 |
| Choose the postgraduate path that suits you | 04 |
| Postgraduate courses | 08 |
| Support while you study | 14 |
| Scholarships and fees | 16 |
| Industry accreditations | 18 |
| Join us | 20 |



The **Murdoch** difference

Ask anyone who's studied here:
there's something special **about Murdoch.**

Murdoch is a place where you can be yourself and be appreciated for who you truly are. It's the kind of place where the lecturers know you by name, and down-to-earth students wave to you across the lawns of Bush Court. We are honoured to welcome staff and students who come from all walks of life.

Whether you want to change the whole world, some of the world, or just your world, our extensive range of courses and hands-on learning facilities will equip you with the skills you need. But the most important thing you'll learn here? To think freely, and to think for yourself.

We don't follow the crowd, and neither do our students. Thousands of free-thinking students have graduated from Murdoch and made their mark on the world. When you're thinking for yourself, there's no limit to what you might achieve.

Free thinking has always been at the heart of Murdoch and continues to steer us towards activities that truly matter. We're different, and we're proud of it.

Welcome to our vibrant community.



5 star rating

for student support

GOOD UNIVERSITIES GUIDE 2021



5 star rating

for teaching quality

GOOD UNIVERSITIES GUIDE 2021



Choose the
postgraduate
path that suits you

Depending on your career goals and the field of study you're looking to pursue, your postgraduate studies can be completed by coursework or research.

Postgraduate study by coursework

With a range of graduate certificate, graduate diploma and masters degree courses on offer, you'll find a postgraduate option to suit you. Many of our postgraduate degrees are available 100% online, which means you can study when and where you like.

GRADUATE CERTIFICATE

You may have started your career and are now looking to take on a leadership role or level-up your skillset. Or you may be interested in pivoting careers or obtaining in-depth knowledge in a field of your interest. Whatever the reason, a graduate certificate is the ideal introduction to postgraduate study and is often made up of four units over one semester full-time, or a part-time equivalent.

GRADUATE DIPLOMA

Are you ready to further expand on the knowledge you've gained in your chosen area of study, and achieve your career goals? A graduate diploma is more in-depth than a graduate certificate, typically consisting of up to eight units over one year full-time, or part-time equivalent and will equip you with the advanced skills and knowledge in an area of choice. Alternatively, a graduate diploma can be completed in as little as two trimesters where available.

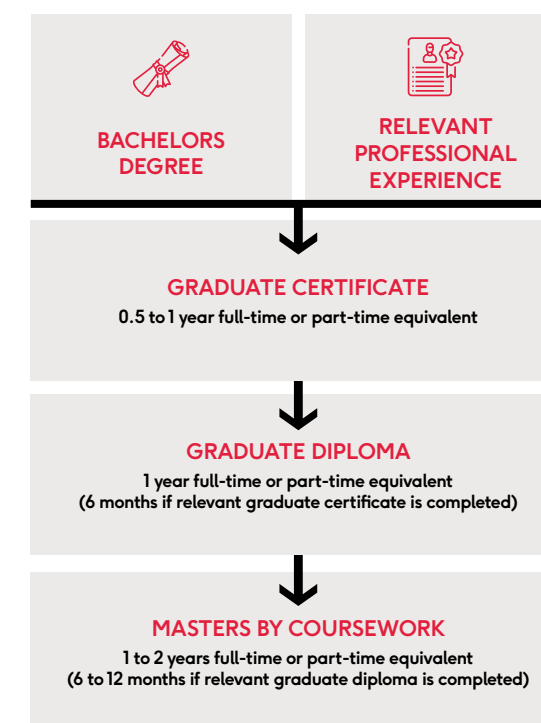
MASTERS DEGREE

This qualification will not only enhance your specialist theoretical and applied knowledge, but you'll also extend your higher-order skills in independent thinking and critical evaluation. Generally, a masters degree will take one or two years to complete full-time, or part-time equivalent.

Take your studies one step at a time

Between life, family, work and study commitments, we understand the challenges that our students face. We know that every journey taken here is different, so we've provided options, support and facilities for you to create your own study pathway. It's your chance to set yourself achievable goals and study at your own pace.

You may want to study a masters degree, but due to life's circumstances you may not have time or a current opportunity. Instead, you can study a graduate certificate or diploma in your area of interest and then be accredited for the units you complete when you commence your masters degree.



Please note: this is a sample diagram only.
Entry requirements and duration may differ between courses.

Postgraduate study by research

Since our inception in 1973, Murdoch has always been a research-led university. Both academics and students are encouraged to challenge norms and think for themselves to deliver outcomes that make a difference to the community. You'll benefit from high-tech laboratories, workshops, clinics and specialist facilities where you can conduct meaningful research, explore thought-provoking theories and produce significant breakthroughs.

By studying a research degree at Murdoch, you will:

BECOME AN EXPERT

Postgraduate studies offer the ability to become a skilled researcher in your field of choice. You'll get to explore your passion, but you will gain a skillset that enables you to contribute to your chosen field.

EXPAND PROFESSIONAL NETWORKS

Network with leading academics, join an association or group, talk to your peers or volunteer. There are plenty of opportunities at Murdoch for you to develop relationships and build the connections vital to your career.

IMPROVE YOUR PERSONAL DEVELOPMENT

Improved personal development skills are important for you to push past your limits and challenge yourself. As a Murdoch postgraduate student, you'll have access to modern facilities and invested staff, as you strengthen your skills, improve your capabilities and maximise your potential. You'll also get the support to undertake independent study, employ different research methods, or expand upon research as you help find solutions to global challenges.

WORK WITH WORLD-LEADING RESEARCHERS

Throughout your studies, you'll learn from world-leading researchers who are there to offer one-to-one support. They'll not only teach you the theoretical knowledge and intensive research skills, but you'll also learn to think for yourself and develop critical skills required for the future of work.

INCREASE YOUR CAREER OPPORTUNITIES

You may be stuck at a crossroad now but studying a research degree will open the door to new opportunities and the chance to control the pathway of your career. Upon finishing your masters degree you'll be presented with new and exciting possibilities in research, education, business and more.

SOLVE REAL-WORLD PROBLEMS

Discover new methods and innovative techniques to make a difference in your community. This is your opportunity to use your unique ideas to solve local and global priorities and find answers to unresolved questions.

Pursue postgraduate study by research through a masters degree, doctorate or PhD:

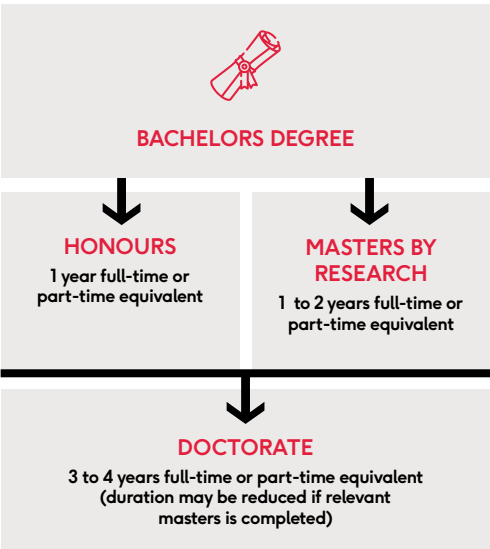
MASTERS DEGREE BY RESEARCH

A masters degree by research is an advanced postgraduate qualification that enables you to undertake an in-depth investigation into a specific academic discipline of your choice over 18 months. This degree is awarded following the completion of a major thesis involving independent original research, under the supervision of a leading academic. Alternatively, our new Accelerated Research Masters with Training is a 12-month, globally recognised pathway for graduate students wanting to undertake research in a discipline of their choice.

DOCTORATE OR PhD

A doctorate is a program of research and advanced study that may enable you to make a significant contribution to knowledge and practice in your professional context. Most doctorates involve independent research of a specific topic under the guidance of a supervisor, leading to a thesis or research project.

Research pathways



Please note: this is a sample diagram only. Entry requirements and duration may differ between courses.



89.6% of postgraduate students are employed at the end of their course

QUALITY INDICATORS FOR LEARNING AND TEACHING (QILT)



Highest possible ranking

for research in Physical Chemistry, Environmental Science and Management, Zoology, Agricultural Biotechnology, Clinical Sciences, and Medical Microbiology

EXCELLENCE IN RESEARCH FOR AUSTRALIA (ERA) 2018 AUSTRALIA RESEARCH COUNCIL



Postgraduate courses

Business

| COURSE | MINIMUM DURATION (YEARS) | AVAILABILITY | | | | COURSE CODE | INTAKES | |
|--|--------------------------|--------------|-----------|----------|----------|-------------|----------|------------|
| | | FULL-TIME | PART-TIME | INTERNAL | EXTERNAL | | SEMESTER | TRIMESTER |
| Graduate Certificate | | | | | | | | |
| Business Administration | 0.5 | ✓ | ✓ | ✓ | ✓ | C1106 | | 1, 2 and 3 |
| Business Analytics | 0.5 | ✓ | ✓ | ✓ | ✓ | C1147 | | 2 |
| Health Administration, Policy and Leadership | 1 | ✓ | ✓ | ✓ | ✓ | C1136 | | 1, 2 and 3 |
| Human Resources Management | 0.5 | ✓ | ✓ | ✓ | ✓ | C1108 | | 1 and 3 |
| Negotiation | 0.5 | ✓ | ✓ | ✓ | ✓ | C1148 | | 2 |
| Project Management | 0.5 | ✓ | ✓ | ✓ | ✓ | C1160 | | 1 and 3 |
| Graduate Diploma | | | | | | | | |
| Human Resources Management | 1 | ✓ | ✓ | ✓ | ✓ | G1060 | | 1, 2 and 3 |
| Masters | | | | | | | | |
| Business | 2* | ✓ | ✓ | ✓ | ✓ | M1290 | | 1, 2 and 3 |
| Business Administration (Global) | 2* | ✓ | ✓ | ✓ | ✓ | M1279 | | 1, 2 and 3 |
| Business Administration | 1 | | ✓ | ✓ | ✓ | M1256 | | 1, 2 and 3 |
| Business Administration and Health Care Management | 2* | ✓ | ✓ | ✓ | ✓ | M1296 | 1 and 2 | 1, 2 and 3 |
| Business Administration and Human Resources Management | 2* | ✓ | ✓ | ✓ | ✓ | M1288 | | 1, 2 and 3 |
| Business Administration and Information Technology | 2* | ✓ | ✓ | ✓ | | M1289 | 1 and 2 | 1, 2 and 3 |
| Health Administration, Policy and Leadership | 2* | ✓ | ✓ | ✓ | ✓ | M1267 | | 1, 2 and 3 |
| Human Resources Management | 2* | ✓ | ✓ | ✓ | ✓ | M1213 | | 1, 2 and 3 |
| Professional Accounting | 1 | ✓ | ✓ | ✓ | ✓ | M1273 | | 1, 2 and 3 |
| Professional Accounting (Advanced) | 2* | ✓ | ✓ | ✓ | ✓ | M1274 | | 1, 2 and 3 |
| Executive Masters | | | | | | | | |
| Leadership, Strategy and Innovation | 2 | ✓ | ✓ | | ✓ | M1253 | | 1, 2 and 3 |

* Can be completed in as little as 4 trimesters if completed in accelerated mode

Creative Arts and Communication

| COURSE | MINIMUM DURATION (YEARS) | AVAILABILITY | | | | COURSE CODE | INTAKES | |
|--|--------------------------|--------------|-----------|----------|----------|-------------|----------|-----------|
| | | FULL-TIME | PART-TIME | INTERNAL | EXTERNAL | | SEMESTER | TRIMESTER |
| Graduate Certificate | | | | | | | | |
| Design Thinking | 0.5 | ✓ | ✓ | ✓ | | C1146 | 2 | |
| Graduate Diploma | | | | | | | | |
| Design Thinking and Service Innovation | 1 | ✓ | ✓ | ✓ | | G1084 | 2 | |
| Web Communication | 1 | ✓ | ✓ | ✓ | | G1071 | 1 and 2 | |
| Masters | | | | | | | | |
| Communication | 2 | ✓ | ✓ | ✓ | | M1277 | 1 and 2 | |

Flexible postgraduate business degrees

A postgraduate business degree will give you the competitive edge you're looking for and enable you to confidently take the next step in your business career. Our postgraduate courses offer a blend of theory and practical work, with a focus on real-world applicability and industry projects or work placements. Offered in trimesters, all postgraduate business degrees are structured with flexibility in mind and give you the opportunity to accelerate your study, completing your degree sooner.



POSTGRADUATE COURSES

Engineering

| COURSE | MINIMUM DURATION (YEARS) | AVAILABILITY | | | | COURSE CODE | INTAKES | |
|----------------------------------|--------------------------|--------------|-----------|----------|----------|-------------|----------|-----------|
| | | FULL-TIME | PART-TIME | INTERNAL | EXTERNAL | | SEMESTER | TRIMESTER |
| Graduate Certificate | | | | | | | | |
| Energy and Carbon Studies | 0.5 | ✓ | ✓ | ✓ | ✓ | C1137 | 1 and 2 | |
| Graduate Diploma | | | | | | | | |
| Energy and Carbon Studies | 1 | ✓ | ✓ | ✓ | ✓ | G1079 | 1 and 2 | |
| Energy and the Environment | 1 | ✓ | ✓ | ✓ | ✓ | G1062 | 1 and 2 | |
| Extractive Metallurgy | 1 | ✓ | ✓ | ✓ | ✓ | G1034 | 1 and 2 | |
| Masters | | | | | | | | |
| Renewable and Sustainable Energy | 2 | ✓ | ✓ | ✓ | ✓ | M1268 | 1 and 2 | |

Health

| COURSE | MINIMUM DURATION (YEARS) | AVAILABILITY | | | | COURSE CODE | INTAKES | |
|--|--------------------------|--------------|-----------|----------|----------|-------------|----------|-----------|
| | | FULL-TIME | PART-TIME | INTERNAL | EXTERNAL | | SEMESTER | TRIMESTER |
| Graduate Certificate | | | | | | | | |
| Counselling | 0.5 | ✓ | ✓ | ✓ | | C1111 | 1 and 2 | |
| Gerontological Healthcare | 0.5 | ✓ | ✓ | | ✓ | C1154 | 1 and 2 | |
| Health Care Management | 1 | ✓ | ✓ | | ✓ | C1116 | 1 and 2 | |
| Graduate Diploma | | | | | | | | |
| Clinical Exercise Physiology | 1 | ✓ | ✓ | ✓ | | G1073 | | 1 |
| Counselling | 1 | ✓ | ✓ | ✓ | | G1055 | 1 and 2 | |
| Psychology | 1 | ✓ | ✓ | ✓ | | G1058 | 1 and 2 | |
| Masters | | | | | | | | |
| Applied Psychology (Clinical Psychology) | 2 | ✓ | ✓ | ✓ | | M1156 | 1 | |
| Applied Psychology (Professional) | 1 | ✓ | | ✓ | | M1238 | 1 | |
| Counselling | 2 | ✓ | ✓ | ✓ | | M1143 | 1 and 2 | |
| Health Care Management | 1.5 | ✓ | ✓ | ✓ | ✓ | M1217 | 1 and 2 | |
| Research Degrees | | | | | | | | |
| Doctor of Psychology (Clinical Psychology) | 4 | ✓ | ✓ | ✓ | | D1073 | 1 and 2 | |
| Master of Exercise Science (Research) | 2 | ✓ | ✓ | ✓ | | M1275 | | 1 and 3 |

Law and Criminology

| COURSE | MINIMUM DURATION (YEARS) | AVAILABILITY | | | | COURSE CODE | INTAKES | |
|----------------------------|--------------------------|--------------|-----------|----------|----------|-------------|----------|------------|
| | | FULL-TIME | PART-TIME | INTERNAL | EXTERNAL | | SEMESTER | TRIMESTER |
| Graduate Certificate | | | | | | | | |
| Criminology | 0.5 | ✓ | ✓ | ✓ | ✓ | C1161 | | 1, 2 and 3 |
| Graduate Diploma | | | | | | | | |
| Criminology | 1 | ✓ | ✓ | ✓ | ✓ | G1093 | | 1, 2 and 3 |
| Masters | | | | | | | | |
| Criminology | 2 | ✓ | ✓ | ✓ | ✓ | M1314 | | 1, 2 and 3 |
| Research Degrees | | | | | | | | |
| Master of Laws by Research | 2 | ✓ | ✓ | ✓ | ✓ | M1235 | 1 and 2 | |

Science

| COURSE | MINIMUM DURATION (YEARS) | AVAILABILITY | | | | COURSE CODE | INTAKES | |
|---|--------------------------|--------------|-----------|----------|----------|-------------|----------|-----------|
| | | FULL-TIME | PART-TIME | INTERNAL | EXTERNAL | | SEMESTER | TRIMESTER |
| Graduate Certificate | | | | | | | | |
| Environmental Assessment and Management | 0.5 | ✓ | ✓ | ✓ | ✓ | C1118 | 1 | |
| Forensic Science (Professional Practice) | 0.5 | ✓ | ✓ | ✓ | | C1131 | 1 and 2 | |
| Plant Biosecurity | 1 | ✓ | ✓ | | ✓ | C1088 | 1 | |
| Systems Medicine | 0.5 | ✓ | ✓ | ✓ | | C1152 | 1 | |
| Graduate Diploma | | | | | | | | |
| Environmental Science | 1 | ✓ | ✓ | ✓ | ✓ | G1053 | 1 and 2 | |
| Forensic Science (Professional Practice) | 1.5 | ✓ | ✓ | ✓ | | G1085 | 1 and 2 | |
| Systems Medicine | 1 | ✓ | ✓ | ✓ | | G1089 | 1 | |
| Masters | | | | | | | | |
| Environmental Science | 1 | ✓ | ✓ | ✓ | ✓ | M1210 | 1 and 2 | |
| Food Security | 2 | ✓ | ✓ | ✓ | ✓ | M1311 | 1 and 2 | |
| Forensic Science (Professional Practice) | 2 | ✓ | ✓ | ✓ | ✓ | M1255 | 1 and 2 | |
| Forensic Science (Professional Practice and Research) | 2 | ✓ | ✓ | ✓ | | M1292 | 1 and 2 | |
| Veterinary Clinical Studies | 1.5 | ✓ | | ✓ | | M1223 | 1 and 2 | |
| Research Degrees | | | | | | | | |
| Doctor of Veterinary Medical Science | 3 | ✓ | ✓ | ✓ | ✓ | D1061 | 1 and 2 | |
| Master of Systems Medicine (Research) | 2 | ✓ | ✓ | ✓ | | M1302 | 1 | |



Are you interested in understanding how people think and behave?

Complete your postgraduate studies in counselling or psychology at Murdoch and gain hands-on experience in our on-campus clinics.

When you study a Master of Counselling or Master of Psychology, you'll work with real patients from the public in our community-oriented clinics — Caladenia Counselling and the Murdoch Psychology Clinic.



Study our new Master of Criminology

Study at the only university in Western Australia to offer this unique course. Gain a competitive edge and learn specialised knowledge and the advanced skills needed to respond to a wide range of tasks in the criminal justice system and the field of criminology.

You'll also learn from leading academics who have significant real-world experience working in prisons, the Australian Federal Police and with the FBI and other foreign agencies.

POSTGRADUATE COURSES

Social and Cultural Studies

| COURSE | MINIMUM DURATION (YEARS) | AVAILABILITY | | | | COURSE CODE | INTAKES | |
|------------------------------------|--------------------------|--------------|-----------|----------|----------|-------------|----------|-----------|
| | | FULL-TIME | PART-TIME | INTERNAL | EXTERNAL | | SEMESTER | TRIMESTER |
| Graduate Certificate | | | | | | | | |
| Community Development | 1 | ✓ | ✓ | ✓ | ✓ | CI107 | 1 and 2 | |
| Policy and Development | 1 | | ✓ | ✓ | | CI135 | 1 | |
| Public Administration | 1 | | ✓ | ✓ | ✓ | CI143 | 1 and 2 | |
| Graduate Diploma | | | | | | | | |
| Asian Language (In-Country) | 1 | ✓ | | ✓ | | G1072 | 1 and 2 | |
| Community Development | 1 | ✓ | ✓ | ✓ | ✓ | G1061 | 1 and 2 | |
| Masters | | | | | | | | |
| Community Development | 2 | ✓ | ✓ | ✓ | ✓ | M1212 | 1 and 2 | |
| Development Studies | 2 | ✓ | ✓ | ✓ | ✓ | M1195 | 1 and 2 | 2 and 3 |
| International Affairs and Security | 2 | ✓ | ✓ | ✓ | ✓ | M1266 | 1 and 2 | 2 and 3 |
| Public Policy and Management | 2 | ✓ | ✓ | ✓ | ✓ | M1194 | 1 and 2 | |
| Sustainable Development | 2 | ✓ | ✓ | ✓ | ✓ | M1214 | 1 and 2 | |

Teaching

| COURSE | MINIMUM DURATION (YEARS) | AVAILABILITY | | | | COURSE CODE | INTAKES | |
|------------------------------------|--------------------------|--------------|-----------|----------|----------|-------------|----------|-----------|
| | | FULL-TIME | PART-TIME | INTERNAL | EXTERNAL | | SEMESTER | TRIMESTER |
| Graduate Certificate | | | | | | | | |
| Tertiary and Adult Education | 1 | | ✓ | ✓ | ✓ | CI025 | 1 and 2 | |
| Education | 0.5 | ✓ | ✓ | ✓ | ✓ | CI153* | 1 and 2 | |
| Graduate Diploma | | | | | | | | |
| Education (Tertiary and Workplace) | 1 | ✓ | ✓ | ✓ | ✓ | G1025 | 1 and 2 | |
| Masters | | | | | | | | |
| Teaching (Primary) | 1.75 | ✓ | ✓ | ✓ | ✓ | M1230** | 1 | |
| Teaching (Secondary) | 1.75 | ✓ | ✓ | ✓ | ✓ | M1284*** | 1 and 2 | |
| Research Degrees | | | | | | | | |
| Master of Education (Research) | 1.5 | ✓ | ✓ | ✓ | ✓ | M1233 | 1 and 2 | |

* Majors in this course include: Early Childhood Principles and Practices (MJ-ECPP), E-Learning (MJ-EL), Inclusive and Special Needs Education (MJ-ISNE), Instructional Leadership (MJ-IL), International Education (MJ-IE), Teaching English Years 7 to 10, Teaching Humanities and Social Sciences (MJ-HSED), Teaching Mathematics Years 7 to 10 (MJ-TM) and Teaching Science Years 7 to 10 (MJ-TS).

** S1 commencement only. If studied part-time the duration is 2.25 years.

*** S2 commencement is PT only for first semester. If studied part-time the duration is 2.25 years. If commencing mid-year the duration is 2.25 years.

Technology

| COURSE | MINIMUM DURATION (YEARS) | AVAILABILITY | | | | COURSE CODE | INTAKES | |
|--|--------------------------|--------------|-----------|----------|----------|-------------|----------|------------|
| | | FULL-TIME | PART-TIME | INTERNAL | EXTERNAL | | SEMESTER | TRIMESTER |
| Graduate Certificate | | | | | | | | |
| Information Technology | 0.5 | ✓ | ✓ | ✓ | ✓ | CI109 | 1 and 2 | |
| Graduate Diploma | | | | | | | | |
| Artificial Intelligence and Data Science | 1 | ✓ | ✓ | ✓ | | G1092 | 1 and 2 | |
| Cyber Security and Networking | 1 | ✓ | ✓ | ✓ | | G1091 | 1 and 2 | |
| Information Technology | 1 | ✓ | ✓ | ✓ | | G1086 | 1 and 2 | |
| Information Technology Management | 1 | ✓ | ✓ | ✓ | | G1051 | 1 and 2 | |
| Masters | | | | | | | | |
| Business Administration and Information Technology | 2 | ✓ | ✓ | ✓ | ✓ | M1289 | 1 and 2 | 1, 2 and 3 |
| Master of Information Technology | | | | | | | | |
| Artificial Intelligence and Data Science | 2 | ✓ | ✓ | ✓ | | M1220 | 1 and 2 | |
| Cyber Security and Networking | 2 | ✓ | ✓ | ✓ | | M1220 | 1 and 2 | |
| Information Technology Management | 2 | ✓ | ✓ | ✓ | | M1220 | 1 and 2 | |
| Master of Science in Information Technology | | | | | | | | |
| Artificial Intelligence and Data Science | 1.5 | ✓ | ✓ | ✓ | | M1294 | 1 and 2 | |
| Cyber Security and Networking | 1.5 | ✓ | ✓ | ✓ | | M1294 | 1 and 2 | |
| Information Technology Management | 1.5 | ✓ | ✓ | ✓ | | M1294 | 1 and 2 | |
| Research Degrees | | | | | | | | |
| Doctor of Information Technology | 3 | ✓ | ✓ | ✓ | ✓ | DI059 | 1 | |

Research Degrees - all study areas

| COURSE | MINIMUM DURATION (YEARS) | AVAILABILITY | | | | COURSE CODE | INTAKES | |
|--|--------------------------|--------------|-----------|----------|----------|--|----------|-----------|
| | | FULL-TIME | PART-TIME | INTERNAL | EXTERNAL | | SEMESTER | TRIMESTER |
| Accelerated Research Masters with Training | 1 | ✓ | ✓ | ✓ | ✓ | M1315 | | 1 |
| Doctor of Philosophy | 5 | ✓ | ✓ | ✓ | ✓ | DI067, DI068, DI069, DI070, DI071, DI072 | 1 and 2 | |
| Master of Philosophy | 3 | ✓ | ✓ | ✓ | ✓ | M1260 and M1261 | 1 and 2 | |
| Research Masters with Training | 1.5 | ✓ | ✓ | ✓ | ✓ | M1262 and M1263 | 1 and 2 | |



Need a career change?

Launch a rewarding career as a school teacher, even if you don't have a teaching background. Our Master of Teaching (Primary) and Master of Teaching (Secondary) is suited to graduates who hold a bachelors degree in a non-education field relevant to teaching. You'll be mentored by our experienced teaching professionals who are here to support you as you develop the specialist knowledge, skills and capabilities required to deliver high quality teaching. You'll also have access to our virtual classroom SimLab™ technology - the only one of its kind in WA. Using actors and avatars, you'll practise dealing with challenging behaviour and develop your conflict resolution skills.



Learn in our IT Innovation Hub

Thinking of studying IT? You'll have access to a new networking and game facility featuring a 24-hour IT Innovation Hub to facilitate training and research, a student common room known as the STAR lounge, plus cyber security and networking labs. A mixed and augmented reality studio, also known as the MaARs room, will provide the latest technology for online gaming development.

Support while you study

Enrolling in postgraduate studies is not only exciting and rewarding but is an important life decision. You may be seeking a new challenge, returning to university after an extended break, transitioning from an undergraduate course, or experiencing university for the first time.

At Murdoch, we provide the flexibility you'll need to balance study, work, family and other commitments. We offer a range of support services, so you can adjust to university life and reach your full potential. These services include:

ORIENTATION

Before you even start your first semester, we host a Postgraduate Orientation Evening. The welcome is a great way to meet commencing students, network with lecturers and other staff, learn tips to help you with your studies and find out where to go for your classes. It's also an opportunity to ask any questions you might have to get you ready to commence your studies.

MYMURDOCH ADVICE

Require advice on wellbeing, study or getting the most out of university? Our team of experts at MyMurdoch Advice are there to provide you with valuable guidance and tips to ensure a successful start to uni life. Student Success Advisors and Peer Academic Coaches are there to make your life easier by offering personalised support services on your studies, providing helpful resources and English language support, advising course plans, showcasing academic skills and much more.

FREE COURSES, SEMINARS AND WORKSHOPS

There are plenty of workshops and sessions hosted by Our Support for Learning team to help you expand on your skills such as time management, getting organised, focusing on long-term goals and prioritising study. They also run the Graduate Research Education and Training (GREAT) program, which offers free professional development seminars and workshops designed specifically for postgraduate students.

INDUSTRY AND NETWORK EXPERTISE

Throughout your study journey you'll be supported by the Careers and Employability team who can assist you with employment-related queries. They offer advice on career planning and development, provide job search resources and coordinate workshops. You'll also obtain information on developing your professional network, improving your employability and gain access to student and graduate opportunities.

THE MURDOCH UNIVERSITY POSTGRADUATE STUDENT ASSOCIATION (MUPSA)

This representative body is run by postgraduate students to not only serve as a social support network for other postgraduate students, but to help you with all aspects of study. They offer workshops and other events, provide bursaries, advice on study and candidature, and advocate on behalf of members.

SUPPORT SERVICES

Your wellbeing matters. There are a number of support services available to help manage your health, and family and caring responsibilities. Our Perth campus hosts a range of facilities including a childcare centre and kindergarten, parent rooms, medical centre, counselling services and more.

For more information on any of our support services, visit
murdoch.edu.au/life-at-murdoch/support-services

“After completing my undergraduate degree at Murdoch, I realised that I wanted to continue with my studies and complete a postgraduate degree. Murdoch has always been fantastic in providing a hands-on career-relevant experience.”

GABBY OCHTMAN
MASTER OF TEACHING (SECONDARY)



Ranked in the TOP 100
universities in the world
under 50 years of age

TIMES HIGHER EDUCATION,
YOUNG UNIVERSITY RANKINGS 2020



Ranked 1st in
Western Australia and
4th overall in Australia

for postgraduate student support.
GOOD UNIVERSITIES GUIDE 2021



Scholarships and fees

UNDERSTAND YOUR FINANCIAL INVESTMENT

When you consider studying a postgraduate degree at Murdoch, it's important to understand the financial investment, and structure, before you apply.

Your fees will depend on several factors, including your citizenship, residency status and the units that you choose. At Murdoch, you pay for the individual units you enrol in, rather than an overall course fee. You will pay your fees at the beginning of each semester.

To understand the cost of your course, visit handbook.murdoch.edu.au/fees

HELP LOAN AVAILABLE TO PROVIDE FINANCIAL ASSISTANCE

If you meet the citizenship and residency requirements, you may be eligible for a HELP loan. This means that you can choose to either pay for your units upfront each semester or defer your fees to a HELP loan.

To find out more visit murdoch.edu.au/study/fees-scholarships/government-support

FINANCIAL ASSISTANCE ACCESSIBLE FOR HIGHER DEGREES BY RESEARCH

The Federal Government provides funding to Australian universities through the Research Training Program (RTP). This program provides fee offset scholarships to students undertaking doctorates and masters by research degrees, so in most cases, you are not required to pay tuition fees.

For more information on the Research Training Program visit education.gov.au/research-training-program

FUNDING AVAILABLE FOR RESEARCH

There are many diverse sources of funding available for research, as well as resources available to assist students with finding funding.

To learn more visit murdoch.edu.au/research/research-and-innovation-office



Scholarships

At Murdoch we're proud to offer a wide range of postgraduate scholarships, with some even covering the entire cost of a coursework degree. Make sure you check out all your options, including Government and private organisation scholarships, before you apply.

To discover our range of scholarships, visit

goto.murdoch.edu.au/scholarships

Did you know that almost three quarters of our postgraduate students study part-time?

For many courses, you can commit to just one unit per semester or study online. We offer flexible study arrangements that allow you to upskill while you're still working, so fitting study into your life may be easier than you think.

Industry accreditations



At Murdoch, we understand you need to develop the skills that will be in demand by future employers.

We hold a range of professional accreditations with various industry bodies to ensure you'll graduate with the right skills needed for your future career.

- Australian Veterinary Boards Council (AVBC)
- Royal College of Veterinary Surgeons (RCVS)
- American Veterinary Medical Association (AVMA)
- Exercise and Sports Science Australia (ESSA)
- Australian Psychology Accreditation Council (APAC)
- Psychotherapy and Counselling Federation of Australia (PACFA)
- Australian Counselling Association (ACA)
- The Australian, New Zealand and Asian Creative Arts Therapies Association (ANZACATA)
- Engineers Australia
- Australian Children's Education and Care Quality Authority (ACEQA)
- Teacher Registration Board of Western Australia (TRBWA)
- Australian Institute for Teaching and School Leadership (AITSL)
- Office of Migration Agents Registration Authority
- Australian Human Resource Institute (AHRI)
- CPA Australia
- Chartered Accountants of Australia and New Zealand (CAANZ)
- Institute of Public Accountants (IPA)
- Australasian College of Health Service Management
- Royal Australian College of Medical Administrators



Join us

Follow these four steps to begin your journey to Murdoch.

1. FIND A COURSE

Explore your options at murdoch.edu.au/courses

Don't forget to take note of the course code as you'll need this for your application when applying directly to Murdoch University.

2. CHECK THE ENTRY REQUIREMENTS

For most of our postgraduate courses, you need to have completed a relevant undergraduate degree. In some cases, you could qualify for entry with evidence of professional work experience.

Entry requirements vary according to the course you want to study, so make sure you check the specific entry requirements for your course before you apply by visiting murdoch.edu.au/courses

3. EXPLORE SCHOLARSHIP OPTIONS

Explore all Murdoch scholarships and find out what you may be eligible for or head to goto.murdoch.edu.au/scholarships

4. APPLY FOR A COURSE

Applying for postgraduate coursework?

You can apply for a postgraduate coursework degree at any time of the year. Simply visit myadmission.murdoch.edu.au

You will need to supply transcripts for assessment, and for some courses, you will need additional documents.

To find out what you will need, you can look up your course and review the checklist by visiting murdoch.edu.au/courses

Applying for postgraduate research?

You can apply for a postgraduate research degree at any time of the year through our online admissions system.

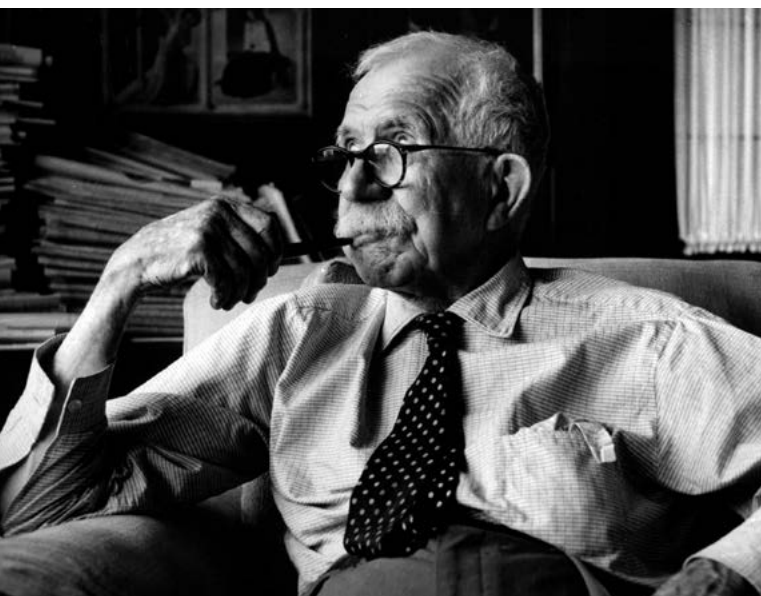
Before applying, you will need to choose a research topic, search for a potential research supervisor and write your research proposal.

You will then need to follow the steps to apply, including downloading an application form and submitting it along with supporting documentation to graduateresearchdegrees@murdoch.edu.au

For a detailed explanation of how to apply, followed by a checklist to remind you of everything you'll need to complete these steps head to murdoch.edu.au/study/research-students/how-to-apply



We look forward to welcoming you into our **free thinking** community



“The only education out of which good can come is the education which teaches you to think for yourself instead of swallowing whatever the fashion of the moment may prescribe.”

- SIR WALTER MURDOCH, OUR FOUNDING FATHER AND ORIGINAL FREE THINKER, 1926.

MEET MURDOCH

90 South Street, Murdoch WA 6150

Telephone: 1300 687 3624 Email: study@murdoch.edu.au



[tiktok.com/@murdochuni](https://www.tiktok.com/@murdochuni)



facebook.com/murdochuniversity



[instagram.com/murdochuniversity](https://www.instagram.com/murdochuniversity)



twitter.com/murdochuni



[linkedin.com/school/murdoch-university](https://www.linkedin.com/school/murdoch-university)



[murdochuniv](https://www.snapchat.com/add/murdochuniv)



[Murdoch University](https://www.youtube.com/murdochuniversity)

KEY DATES FOR 2022

| | SEMESTER 1 | SEMESTER 2 |
|------------------|--------------------|---------------------|
| Orientation Week | 21–25 February | 25–29 July |
| Semester Period | 28 February–3 June | 1 August–4 November |
| Exam Period | 11–25 June | 12–26 November |

Disclaimer: The information contained in this publication was correct as at April 2021, but is subject to amendment without notice. The University reserves the right to cancel, without notice, any units or courses if the number of students enrolled in these falls below limits set by the University. © 2021 Murdoch University. This publication is copyright. Except as permitted by the Copyright Act no part of it may in any form or by any electronic, mechanical, photocopying, recording or any other means be reproduced, stored in a retrieval system or be broadcast or transmitted without the prior permission of the publisher.